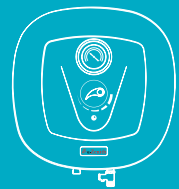
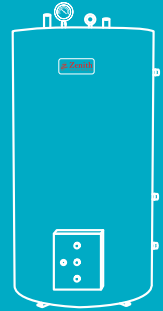


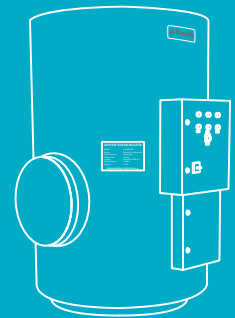
PERFORMANCE
GUARANTEED



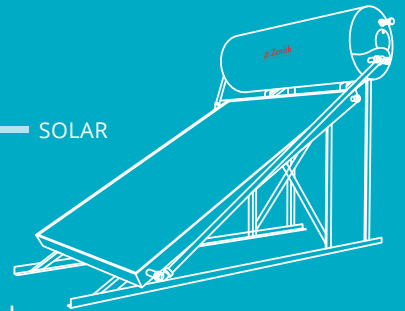
DOMESTIC



COMMERCIAL



SOLAR





Company Profile

Design for Performance

Design of all Zenith products is based on principles of:

- Consistent performance
- Easy to use
- Safety and reliability
- Value for the money



Made to Perfection

Production processes are established using state of the art equipment to achieve precision and accuracy. This ensures quality built into every unit produced

Smile of Confidence

Smile of confidence across the border brings towering success. We have built our reputation in the Middle East and Asian markets and now our wings are spreading globally.



Inside View

1. Secondary Safety Valve (Optional for SASO)

An additional safety valve is installed at the top of the unit to give added protection against increased pressure levels in the storage tank.

2. Storage Tank

The steel tank interior has a Duraglass coating which guarantees protection against corrosive & fungi formatting agents.

3. Polyurethane Foam

The dense honey comb structure of the polyurethane foam helps to retain heat for an extended period of time, thus offering significant savings in electricity consumption.

4. Magnesium Anode

Prevents electrolytic corrosion, which in turn gives the tank a longer life.

5. Heating Element

The immersion type heating element is constructed from Nickel-Chromium resistance wire sheathed in mineral filling, the whole being encased in a copper tube & sealed against moisture.

6. Outer Body

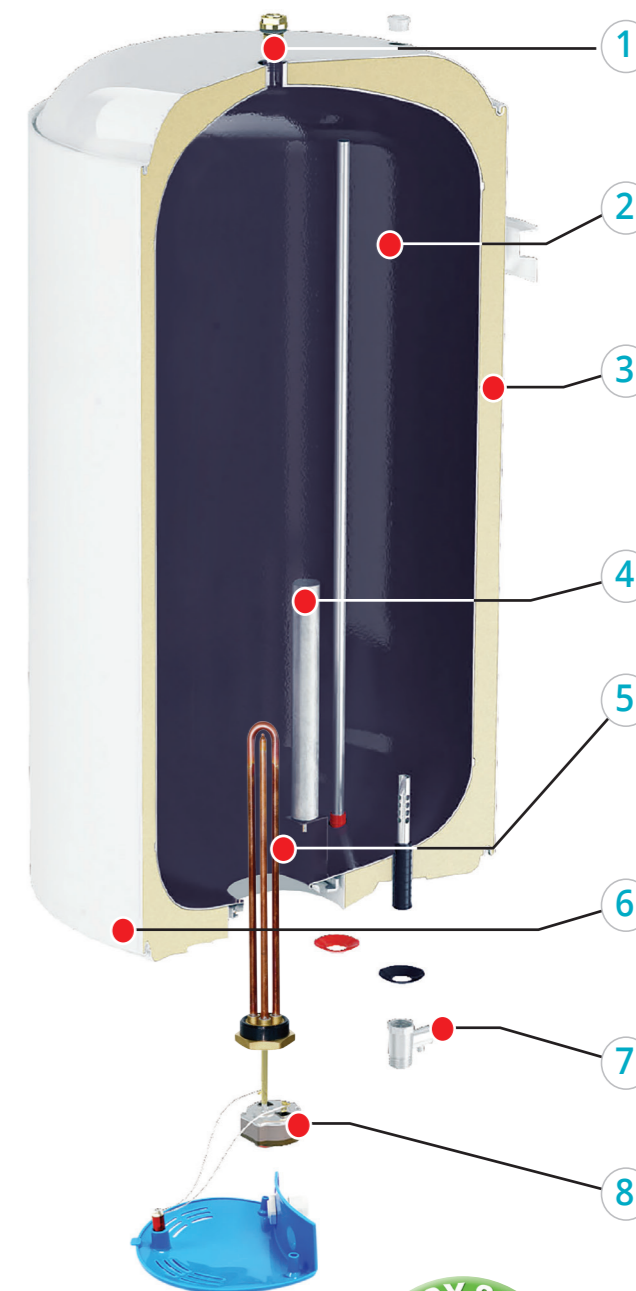
A Metal outer shell coated with a baked white gloss finish, provides an elegant look & offers

7. Safety Valve

It has dual functions of non return valve & pressure release.

8. Thermostat

An adjustable thermostat disconnects the water heater from electric supply in the event of water exceeding a pre-set temperature. A lasting protection against corrosion.



Choose Your Model Depending on Your Hot Water Needs

| Users | | | | | |
|-----------------------------|----|----|--------|---------|-----|
| Appliance Capacity (Liters) | 30 | 50 | 80-100 | 120-150 | 200 |



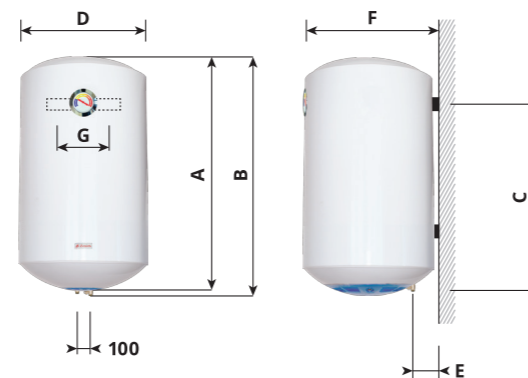
Vertical Wall Mount

Technical Information

| Capacity (Liters) | Height (mm) | Diameter (mm) | Voltage (Volt) | Standard Power (KW) * | Maximum Working Temp (C°) | Maximum Working Pressure (Bar) |
|-------------------|-------------|---------------|----------------|-----------------------|---------------------------|--------------------------------|
| 30 | 495 | 390 | 220 - 240V | 1.2 | 70 | 8bar |
| 50 | 560 | 440 | 220 - 240V | 1.2 | 70 | 8bar |
| 80 | 800 | 440 | 220 - 240V | 1.2 | 70 | 8bar |
| 100 | 970 | 440 | 220 - 240V | 1.5 | 70 | 8bar |

* Power for each capacity can be customized as per requirement

| Capacity (Liters) | Dimensions (mm) | | | | | | |
|-------------------|-----------------|-----|-----|-----|-----|-----|-----|
| | A | B | C | D | E | F | G |
| 30 | 475 | 495 | 345 | 390 | 150 | 425 | 270 |
| 50 | 540 | 560 | 385 | 440 | 150 | 475 | 270 |
| 80 | 780 | 800 | 665 | 440 | 150 | 475 | 270 |
| 100 | 950 | 970 | 785 | 440 | 150 | 475 | 270 |



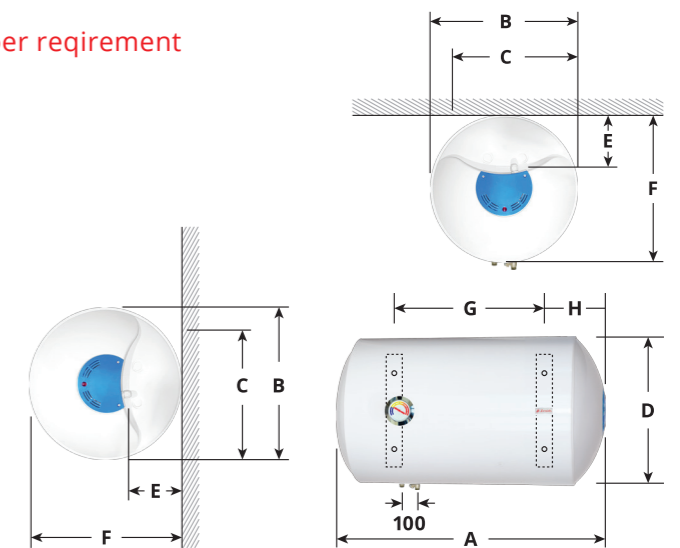
Horizontal/ Wall/Ceiling Mount

Technical Information

| Capacity (Liters) | Height (mm) | Diameter (mm) | Voltage (Volt) | Standard Power (KW) * | Maximum Working Temp (C°) | Maximum Working Pressure (Bar) |
|-------------------|-------------|---------------|----------------|-----------------------|---------------------------|--------------------------------|
| 30 | 475 | 390 | 220 - 240V | 1.2 | 70 | 8bar |
| 50 | 540 | 440 | 220 - 240V | 1.2 | 70 | 8bar |
| 80 | 780 | 440 | 220 - 240V | 1.2 | 70 | 8bar |
| 100 | 950 | 440 | 220 - 240V | 1.5 | 70 | 8bar |
| 120 | 1040 | 440 | 220 - 240V | 2.0 | 70 | 8bar |
| 150 | 1300 | 440 | 220 - 240V | 2.5 | 70 | 8bar |
| 200 | 1590 | 440 | 220 - 240V | 3.0 | 70 | 8bar |

* Power for each capacity can be customized as per requirement

| Capacity (Liters) | Dimensions (mm) | | | | | | | |
|-------------------|-----------------|-----|-----|-----|-----|-----|------|-----|
| | A | B | C | D | E | F | G | H |
| 30 | 475 | 410 | 265 | 390 | 215 | 410 | 270 | 170 |
| 50 | 540 | 465 | 405 | 440 | 240 | 460 | 270 | 170 |
| 80 | 780 | 465 | 405 | 440 | 240 | 460 | 290 | 255 |
| 100 | 950 | 465 | 405 | 440 | 240 | 460 | 290 | 325 |
| 120 | 1140 | 465 | 415 | 440 | 255 | 475 | 600 | 255 |
| 150 | 1240 | 465 | 415 | 440 | 255 | 475 | 855 | 265 |
| 200 | 1750 | 465 | 415 | 440 | 255 | 475 | 1290 | 245 |



Prismo

15 & 30 Liters



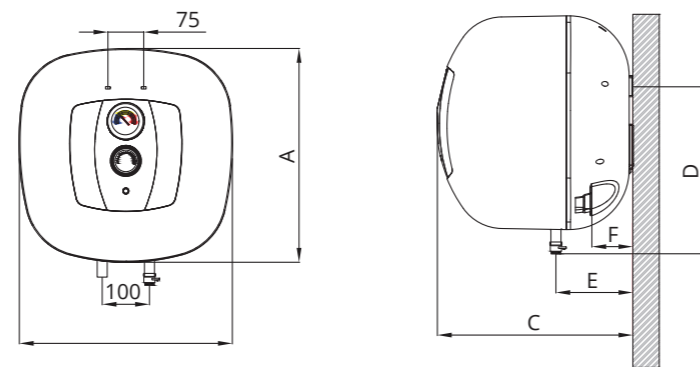
Technical Information

| Capacity (Liters) | A (mm) | B (mm) | C (mm) | Voltage | D (mm) | E (mm) | F (mm) | Standard Power (KW) |
|-------------------|--------|--------|--------|------------|--------|--------|--------|---------------------|
| 15L | 400 | 400 | 310 | 220 - 240V | 300 | 125 | 70 | 1.2 |
| 30L | 445 | 445 | 410 | 220 - 240V | 350 | 160 | 85 | 1.2 |

Color Options

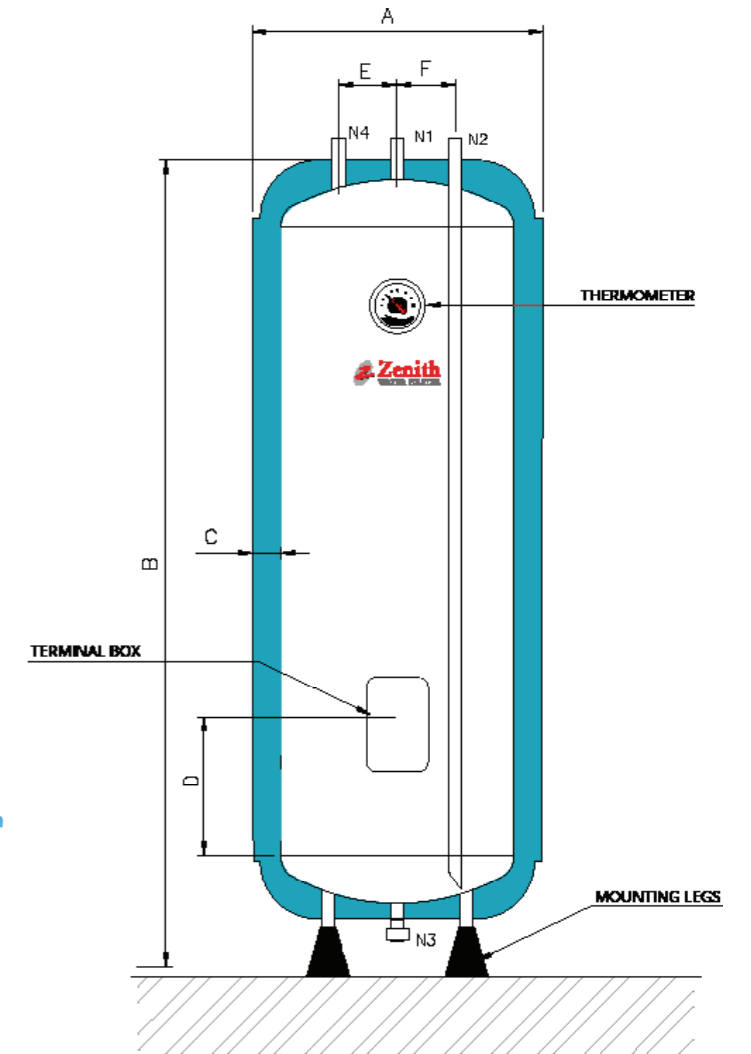


* Power for each capacity can be customized as per requirement



Central Water Heaters & Calorifiers

150 - 300 Liters (Floor Mount Units)



Technical Information

| Overall Tank Dimensions (mm) | | | | | | | |
|------------------------------|--------|--------|--------|--------|--------|--------|---------------------|
| Model | A (mm) | B (mm) | C (mm) | D (mm) | E (mm) | F (mm) | Standard Power (KW) |
| ZT150VFM | 460 | 1350 | 25 | 95 | 110 | 110 | 2.5 |
| ZT200VFM | 540 | 1450 | 25 | 95 | 110 | 110 | 3.0 |
| ZT300VFM | 620 | 1470 | 35 | 95 | 150 | 150 | 3.0 |



Stainless Steel Calorifier

Z450VFM & Z10,000VFM



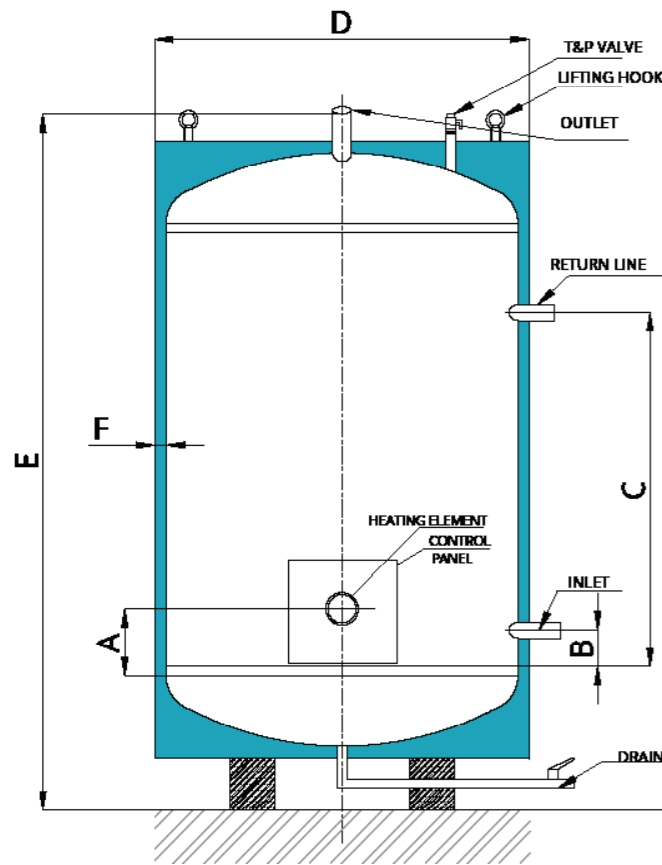
Technical Information

| Product Dimensions (mm) | | | | | | | |
|-------------------------|--------|--------|--------|--------|--------|--------|---------------------|
| Capacity (Liters) | A (mm) | B (mm) | C (mm) | D (mm) | E (mm) | F (mm) | Standard Power (KW) |
| Z450VFM | 100 | 70 | 900 | 800 | 1680 | 75 | 9.0 |
| Z500VFM | 100 | 70 | 900 | 800 | 1700 | 75 | 9.0 |
| Z750VFM | 100 | 70 | 1435 | 800 | 2400 | 75 | 12.0 |
| Z1000VFM | 100 | 80 | 1435 | 900 | 2350 | 75 | 18.0 |
| Z1500VFM | 100 | 90 | 740 | 1400 | 1660 | 100 | 24.0 |
| Z2000VFM | 100 | 90 | 910 | 1400 | 1890 | 100 | 24.0 |
| Z2500VFM | 100 | 90 | 1450 | 1400 | 2610 | 100 | 27.0 |
| Z3000VFM | 100 | 90 | 1800 | 1400 | 3070 | 100 | 36.0 |
| Z4000VFM | 100 | 90 | 1450 | 1700 | 2760 | 100 | 48.0 |
| Z5000VFM | 100 | 90 | 1800 | 1700 | 3220 | 100 | 48.0 |
| Z7500VFM | 100 | 90 | 1800 | 2050 | 3370 | 100 | 72.0 |
| Z7500VFM | 100 | 90 | 1800 | 2050 | 3370 | 100 | 72.0 |
| ZT400VF | 100 | 70 | 900 | 800 | 1500 | 75 | 9.0 |

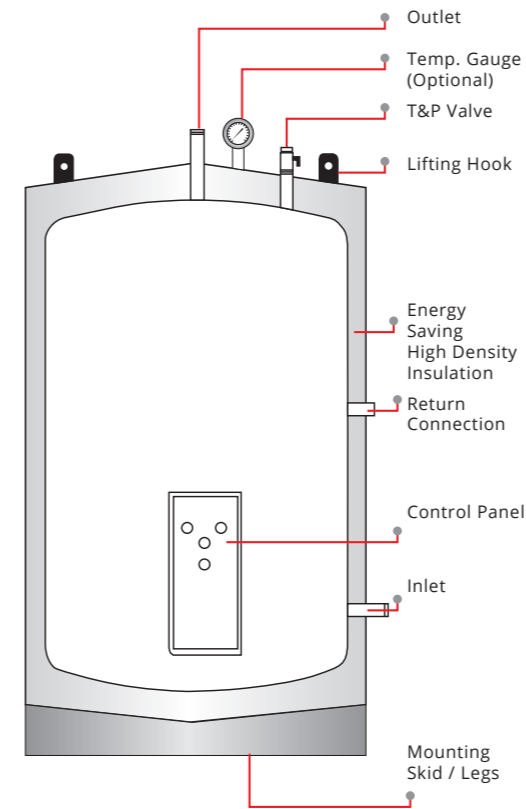
* Initial Heating Time is calculated with $\Delta T = 45^\circ C$

- # Rated power can be customized to match the specifications.
- # Sized above 260 Gallons could be customized to fit the space available.
- # Any other additional feature and/or plumbing connections could be provided to meet requirements.
- # Tolerance of the height: $\pm 0.5\%$

Please refer to the "Power option" page for the additional requirements.



300 ltr to 500 ltr

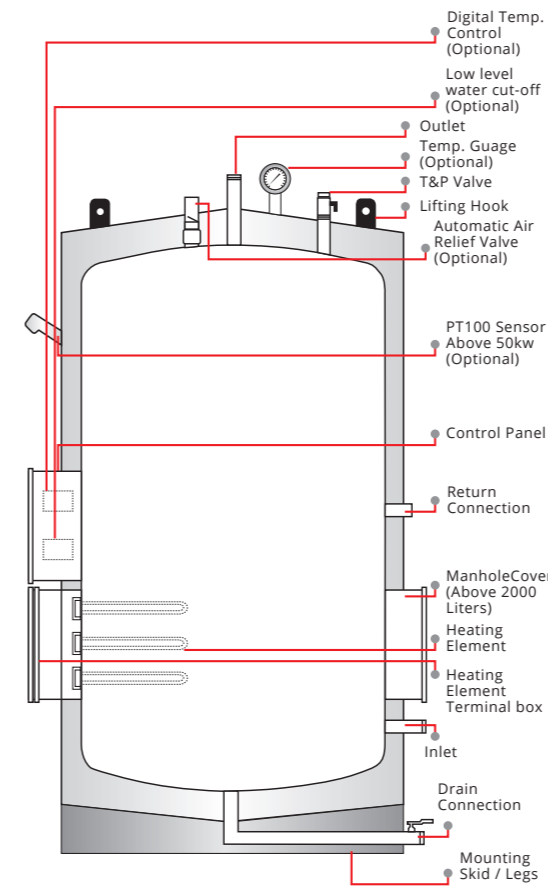


Power Options

| KW Input | No. of Elements | Full Load Current (A) | | Heat Recovery at 45°C | |
|----------|-----------------|-----------------------|---------------------|-----------------------|-----------------|
| | | 220 - 240V 1 PH (A) | 380 - 440V 3 PH (A) | (Gallons / Hour) | (Liters / Hour) |
| 1.5 | 1 + 1.5 | 6.3 | - | 8 | 29 |
| 2.0 | 1 | 8.3 | - | 10 | 38 |
| 2.5 | 1 | 10.4 | - | 13 | 48 |
| 3.0 | 1 | 12.5 | - | 15 | 58 |
| 4.0 | 1 | 16.7 | - | 20 | 77 |
| 4.5 | 1 | - | 5.9 | 23 | 86 |
| 5.0 | 2 | 20.8 | - | 25 | 96 |
| 6.0 | 1 | 25.0 | 7.8 | 30 | 115 |
| 9.0 | 1 | 37.5 | 11.7 | 45 | 171 |
| 12.0 | 1 | - | 15.7 | 60 | 229 |
| 18.0 | 2 x 9 | - | 23.5 | 91 | 343 |
| 24.0 | 2 x 12 | - | 31.4 | 121 | 457 |
| 27.0 | 3 x 9 | - | 35.3 | 136 | 514 |
| 36.0 | 3 x 12 | - | 47.0 | 181 | 686 |
| 48.0 | 4 x 12 | - | 58.8 | 226 | 857 |
| 60.0 | 4 x 15 | - | 78.4 | 302 | 1143 |
| 72.0 | 4 x 18 | - | 94.0 | 362 | 1371 |
| 90.0 | 5 x 18 | - | 117.6 | 453 | 1714 |

* Full load current calculated for maximum voltage

750 ltr to 10,000 ltr



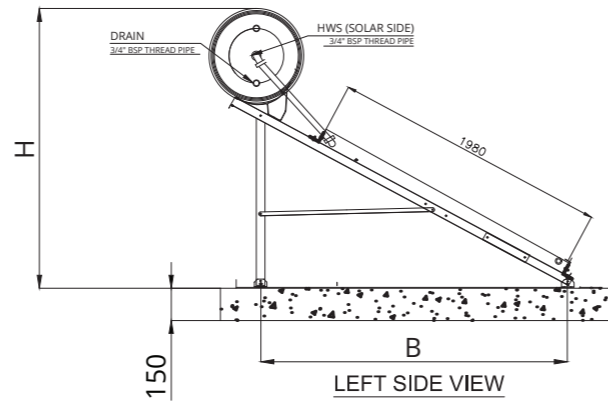
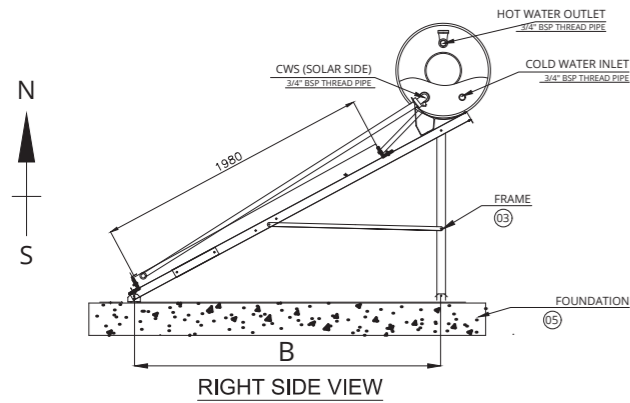
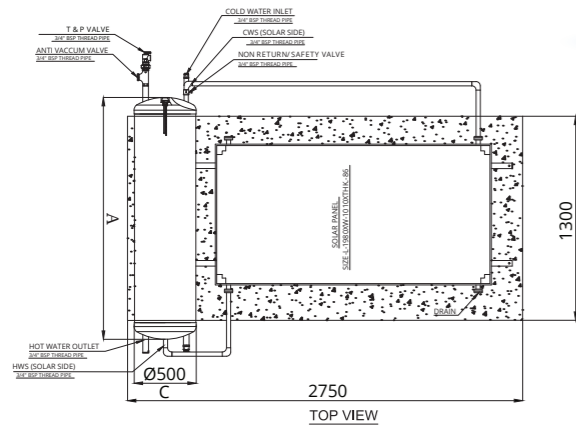
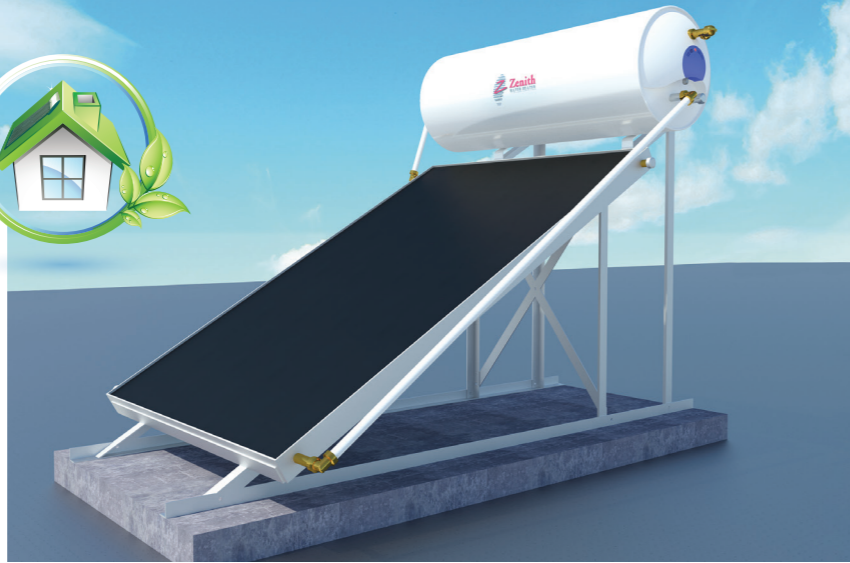
Power Options

| KW Input | No. of Elements | Full Load Current (A) | | Heat Recovery at 45°C | |
|----------|-----------------|-----------------------|-----------------|-----------------------|-----------------|
| | | 220 - 240V 1 PH | 380 - 440V 3 PH | (Gallons / Hour) | (Liters / Hour) |
| 99 | 11 X 9 Kw | - | 129.3 | 498 | 1886 |
| 108 | 12 X 9 Kw | - | 141.0 | 544 | 2057 |
| 117 | 13 X 9 Kw | - | 152.8 | 589 | 2229 |
| 126 | 14 X 9 Kw | - | 164.6 | 634 | 2400 |
| 135 | 15 X 9 Kw | - | 176.3 | 680 | 2572 |
| 144 | 16 X 9 Kw | - | 188.0 | 725 | 2743 |
| 153 | 17 X 9 Kw | - | 199.8 | 770 | 2915 |
| 162 | 18 X 9 Kw | - | 211.6 | 815 | 3086 |
| 171 | 19 X 9 Kw | - | 223.4 | 861 | 3257 |
| 180 | 20 X 9 Kw | - | 235.1 | 906 | 3429 |
| 189 | 21 X 9 Kw | - | 246.9 | 951 | 3601 |
| 198 | 22 X 9 Kw | - | 258.6 | 997 | 3772 |
| 207 | 23 X 9 Kw | - | 270.4 | 1042 | 3943 |
| 216 | 24 X 9 Kw | - | 282.1 | 1087 | 4115 |
| 225 | 25 X 9 Kw | - | 293.9 | 1133 | 4286 |
| 234 | 26 X 9 Kw | - | 305.6 | 1179 | 4458 |
| 243 | 27 X 9 Kw | - | 317.4 | 1223 | 4630 |
| 252 | 28 X 9 Kw | - | 329.2 | 1268 | 4801 |
| 261 | 29 X 9 Kw | - | 340.9 | 1314 | 1973 |
| 270 | 30 X 9 Kw | - | 352.7 | 1359 | 5144 |

* Full load current calculated for maximum voltage

Solar Systems

Thermosyphonic Water Heater

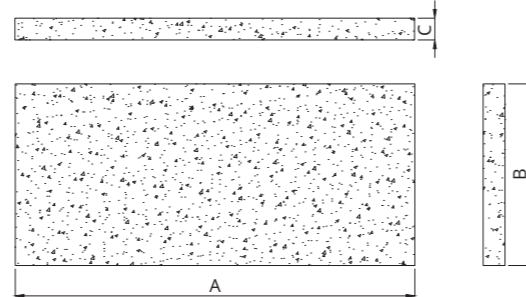


Technical Information

| Model | Tank Capacity (L) | No. of Users | A Width (mm) | B Length (mm) | H Height (mm) | No. of Panels (2m ² each) | Panel's Length (mm) | Panel's Width (mm) | Electrical Backup (W) | C Diameter (mm) |
|-------|-------------------|--------------|--------------|---------------|---------------|--------------------------------------|---------------------|--------------------|-----------------------|-----------------|
| ZS150 | 150 | 3 | 1350 | 2100 | 1690 | 1 | 1980 | 1010 | 3000 | 500 |
| ZS200 | 200 | 4 | 1850 | 2100 | 1690 | 1 | 1980 | 1010 | 3000 | 500 |
| ZS300 | 300 | 6 | 1500 | 2100 | 1830 | 2 | 1980 | 1010 | 3000 | 620 |

Foundation Drawing Information

| Model | Tank Capacity (L) | A Width (mm) | B Length (mm) | H Height (mm) | Panel Length (mm) | Panel Width (mm) | Electrical Backup (W) |
|-------|-------------------|--------------|---------------|---------------|-------------------|------------------|-----------------------|
| ZS150 | 150 | 2750 | 1300 | 150 | 1980 | 1010 | 3000 |
| ZS200 | 200 | 2750 | 1300 | 150 | 1980 | 1010 | 3000 |
| ZS300 | 300 | 2752 | 2800 | 150 | 1980 | 1010 | 3000 |



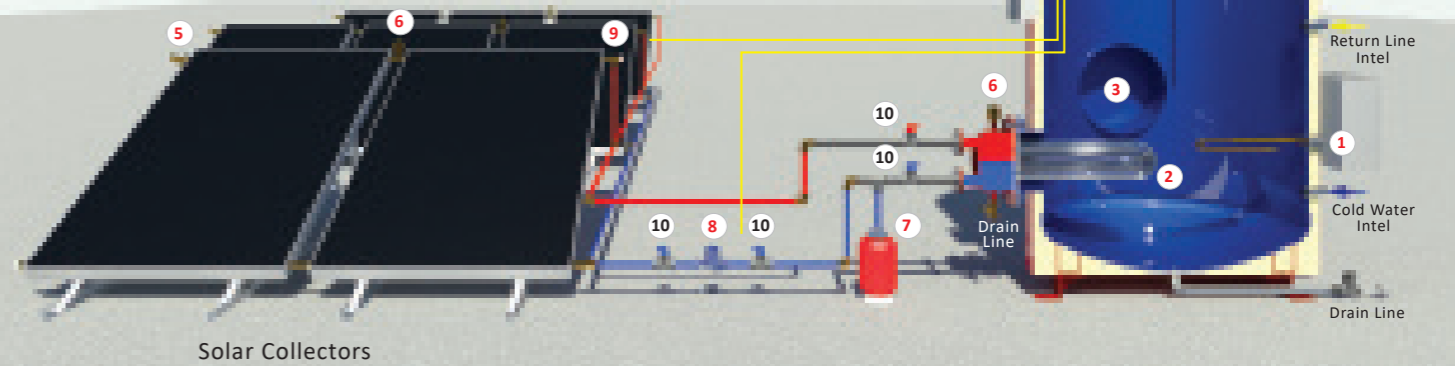
* Possible combinations up to 10000 (L)

Solar Systems

Forced Circulation Water Heater



1. Backup Heating Element
2. U-Tube Heat Exchanger
3. Servicing Manhole
4. Magnesium Anode
5. Temperature and Pressure Relief Valve
6. Air Vent valve
7. Expansion Vessel
8. Circulation Pump
9. Solar Sensor
10. Isolating Valve



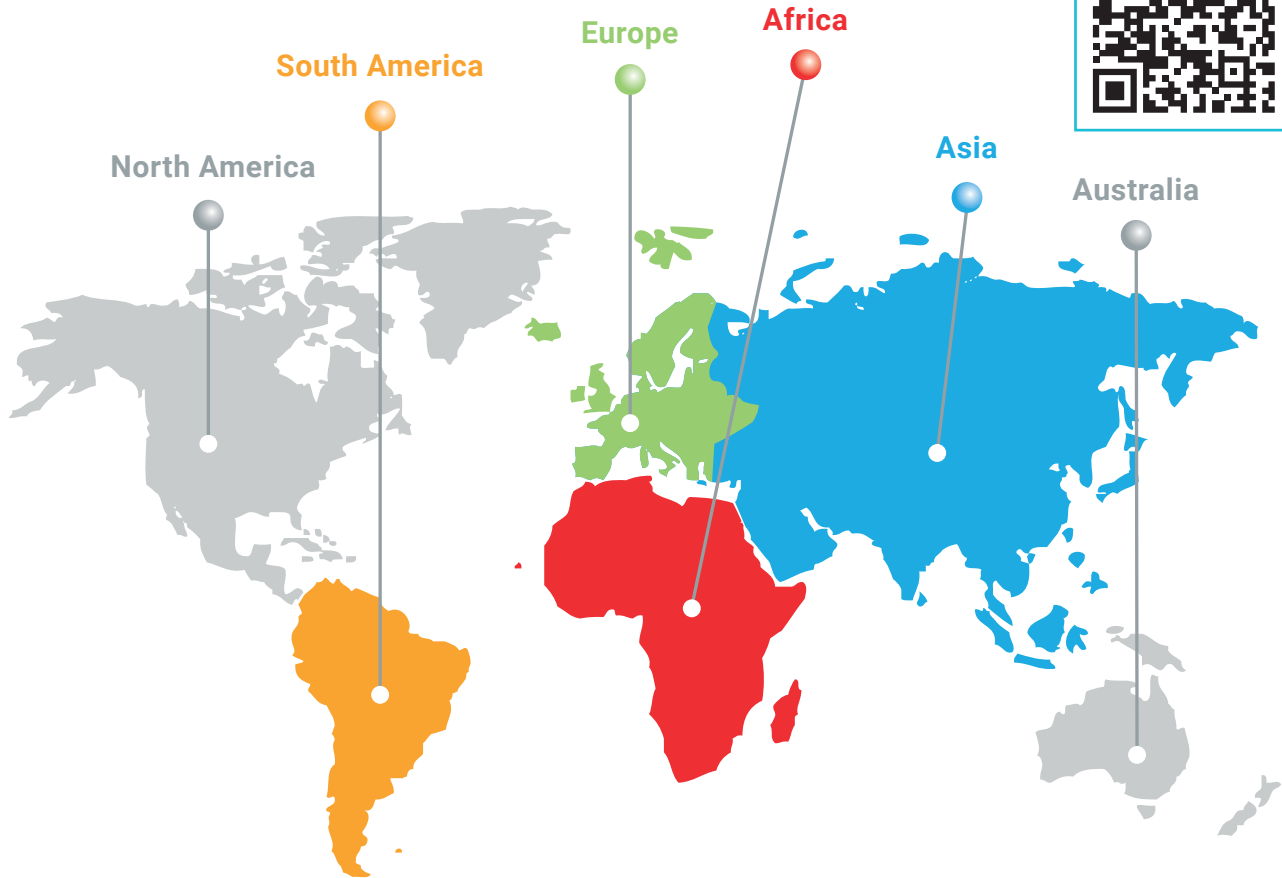
Technical Information

| Model | Heater | | |
|----------|--------|---------------|-----------------|
| | KW | A Height (mm) | B Diameter (mm) |
| ZS 500 | 6 | 1700 | 800 |
| ZS 750 | 6 | 2400 | 800 |
| ZS 1000 | 9 | 2350 | 900 |
| ZS 1500 | 9 | 1660 | 1400 |
| ZS 2000 | 18 | 1890 | 1400 |
| ZS 2500 | 18 | 2610 | 1400 |
| ZS 3000 | 24 | 3070 | 1400 |
| ZS 4000 | 24 | 2760 | 1700 |
| ZS 5000 | 30 | 3220 | 1700 |
| ZS 7500 | 36 | 3370 | 2050 |
| ZS 10000 | 36 | 3760 | 2300 |

* Possible combinations up to 10000 (L)



Export Map



EUROPE

Zenith International Doeel

Str. Miroslav Krleza Nr. 20, 1000 Skopje,
Republic of Macedonia. Tel: +38923110909
E-mail: contact@zenithinternational.mk

MIDDLE EAST

Star Industrial Products L.L.C.

Tel: +971 6 7434389, Fax: +971 6 7438085
P.O. Box: 2891 Ajman, U.A.E.
E-mail: zenithok@emirates.net.ae, info@zenithuae.net

Packaging & Shipping Information

| Capacity (Liters) | Unit Volume (CU-M) | Gross Weight (KG) | Net Weight (KG) | Units in 40 Feet Container | Units in 50 Feet Trailer |
|-------------------|--------------------|-------------------|-----------------|----------------------------|--------------------------|
| 15 | 0.0583 | 7.50 | 6.50 | 1200 | 1296 |
| 30 | 0.0930 | 10.60 | 9.50 | 700 | 850 |
| 50 | 0.1227 | 14 | 12.50 | 500 | 640 |
| 80 | 0.1639 | 19 | 17.50 | 375 | 480 |
| 100 | 0.1861 | 22 | 20 | 300 | 480 |
| 120 | 0.2200 | 25 | 23 | 336 | 384 |
| 150 | 0.2792 | 31 | 28 | 240 | 310 |
| 200 | 0.3553 | 43 | 39 | 195 | 224 |